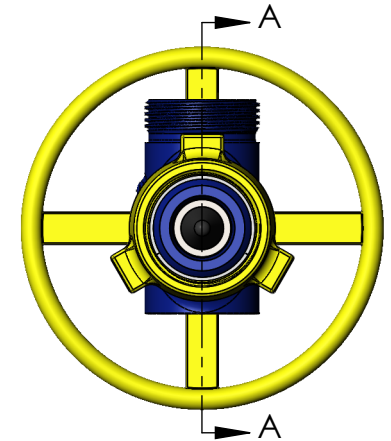
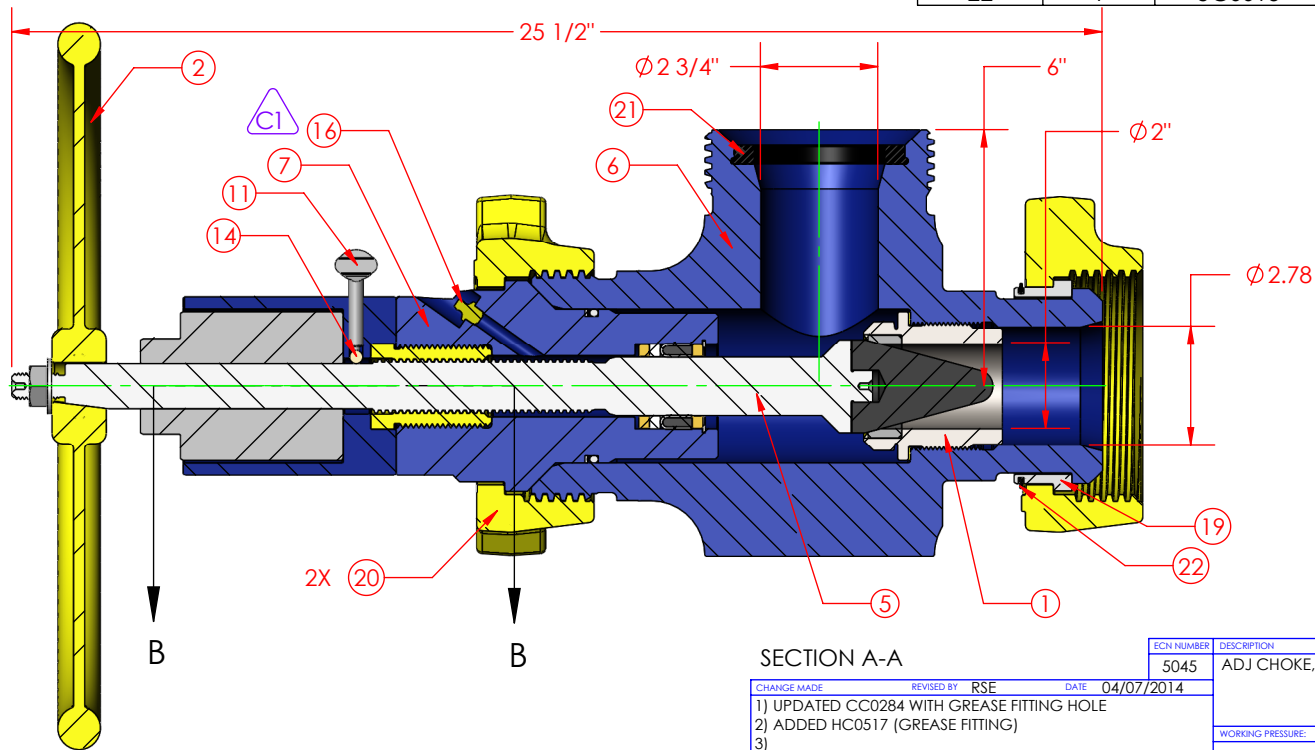


ITEM NO.	QTY.	PART NUMBER	DESCRIPTION
1	1	CC0007	CHOKE SEAT, 2" MAX CARBIDE H-2
2	1	CC0008	HANDWHEEL, 3" ADJ CHOKE 2" MAX
3	1	CC0027	CHOKE PACKING, H2 COMPLETE (2" MAX)
4	1	CC0034	CHOKE INDICATOR, 2" MAX CARBIDE H-2
5	1	CC0059	CHOKE STEM, 2" MAX TUNGSTEN CARBIDE H-2
6	1	CC0182	CHOKE BODY, 3" 1502FM STD 15M 2" MAX
7	1	CC0284	BONNET, 3" STD 15M H-2 (HAMMER)
8	1	CC0285	BONNET THREAD BUSHING, 3" CHOKE
9	1	CC0286	BONNET EXTENSION, 3" MSI MANUAL
10	1	HC0012	HEX NUT, 5/8"-11 HEAVY HEX 2H
11	1	HC0013	THUMB SCREW, 3/8"-16 x 1.50" (NYLON TIPPED)
12	1	HC0014	FLAT WASHER, 5/8" STD
13	2	HC0111	LOCK WASHER, 1/4" HIGH COLLAR
14	1	HC0177	BALL, 5/16" BRASS CDA270 GRADE 200
15	2	HC0203	SOC HD, 1/4"-20 x 1.50"
16	1	HC0517	GREASE FITTING, 1/8" NPT ALEMITE
17	1	OC0023	O-RING, 3" BONNET H2S (2-339)
18	1	OC0024	PAR-BACK, 3" BONNET H2S (8-339)
19	1	UC0006	NUT RETAINER SET, 3" 1502
20	2	UC0009	WINGNUT, 3" 1502 STD
21	1	UC0013	RESILIENT SEAL, 3" 1502 STD (BUNA)
22	1	UC0015	SPIRAL RETAINER RING, 3" 1502

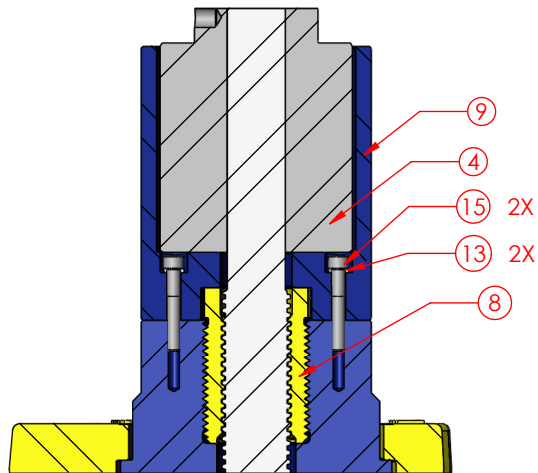


SECTION A-A

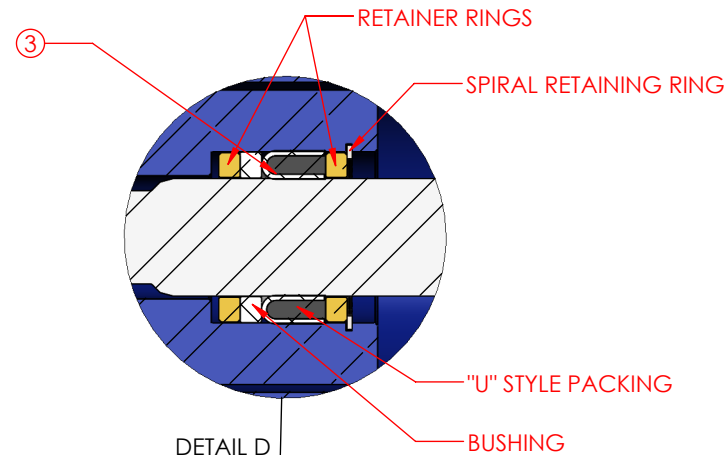
CHANGE MADE	REVISED BY	RSE	DATE	04/07/2014
1)	UPDATED CC0284 WITH GREASE FITTING HOLE			
2)	ADDED HC0517 (GREASE FITTING)			
3)				
4)				
5)				
6)				
7)				

ECH NUMBER		DESCRIPTION	
5045		ADJ CHOKE, 3" 1502FM STD 15M 2" MAX	
WORKING PRESSURE:	TEMPERATURE CLASS:	DRAWN BY:	
15,000 PSI	PU	HAHII	
RETAINED FLUIDS:	PR LEVEL:	DATE:	
BB	1	1/6/03	
WEIGHT:	SHEET	PART NUMBER	REV
158 lbs.	SHEET 1 OF 2	CA0070	C

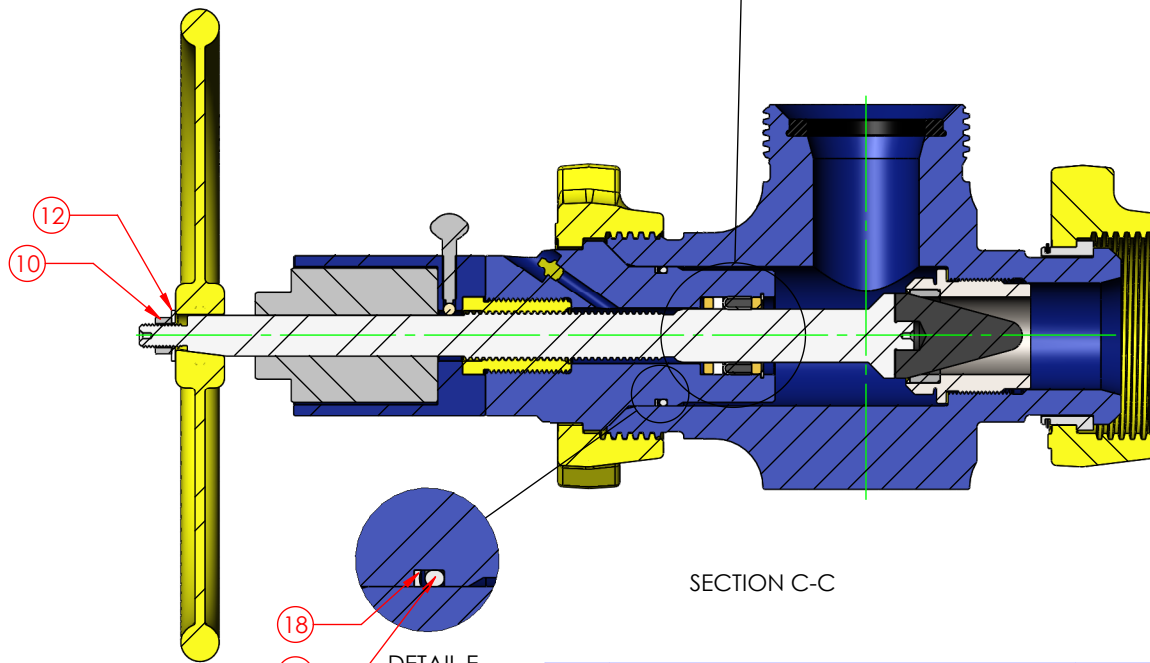
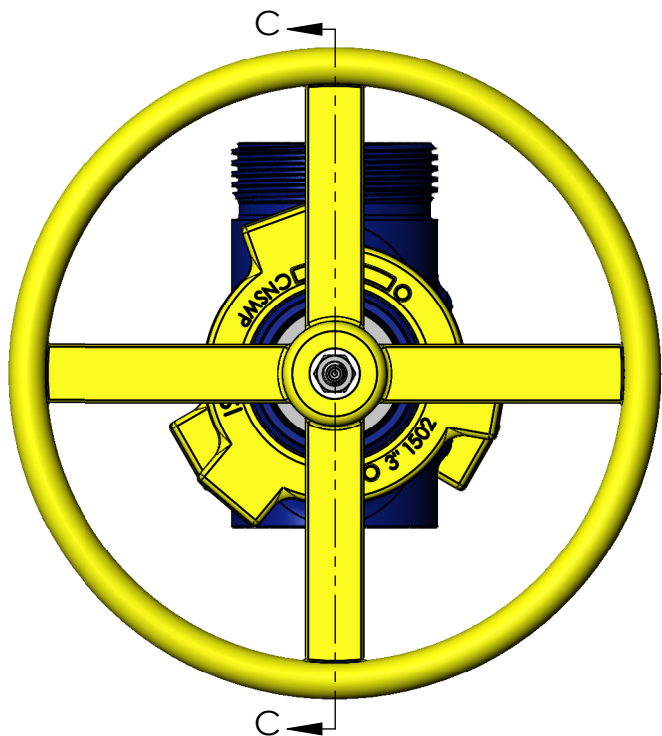




SECTION B-B



DETAIL D



SECTION C-C



DETAIL E

CHANGE MADE	REVISED BY	RSE	DATE	04/07/2014
1)	UPDATED CC0284 WITH GREASE FITTING HOLE			
2)	ADDED HC0517 (GREASE FITTING)			
3)				
4)				
5)				
6)				
7)				

ECN NUMBER	DESCRIPTION
5045	ADJ CHOKE, 3"1502FM STD 15M 2"MAX

WORKING PRESSURE:	TEMPERATURE CLASS:	DRAWN BY:
15,000 PSI	PU	HAHII
RETAINED FLUIDS:	PR LEVEL:	DATE:
BB	1	1/6/03
WEIGHT:	SHEET:	PART NUMBER:
158 lbs.	SHEET 2 OF 2	CA0070

