

1

2

3

4

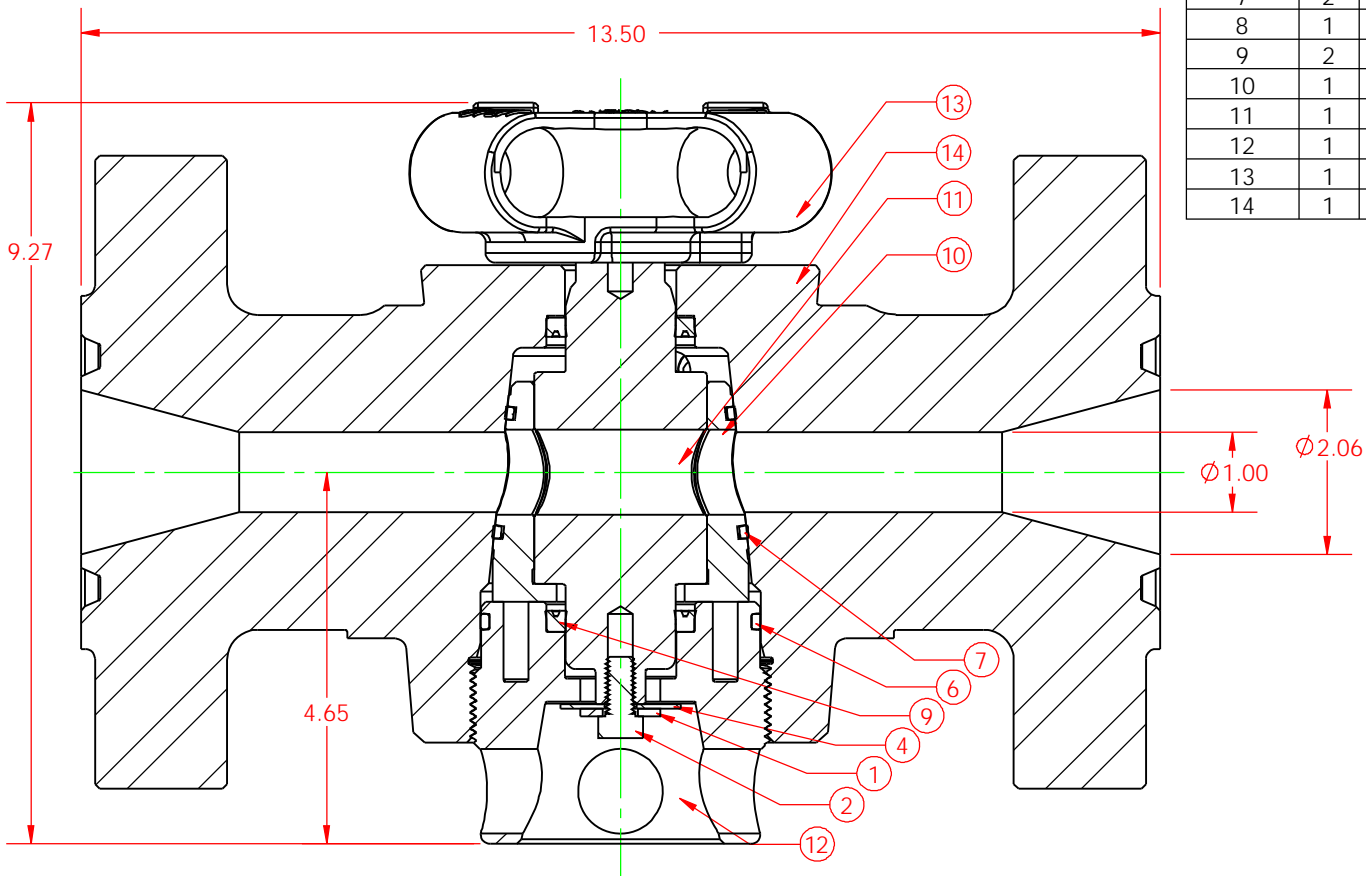
5

6

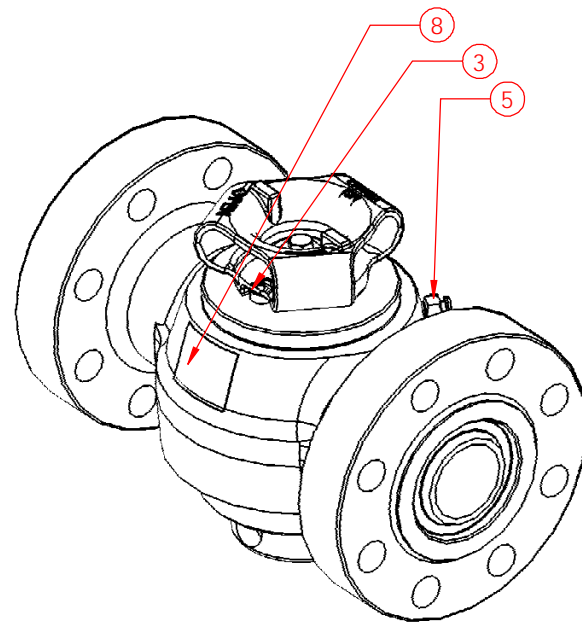
7

8

ITEM NO.	QTY.	PART NUMBER	DESCRIPTION
1	2	HC0002	FLAT WASHER, 3/8" STD
2	2	HC0004	HEX HD, 3/8"-16 x 0.75"
3	1	HC0005	SOC HD, 3/8"-16 x 0.50"
4	2	HC0027	FLAT WASHER, 3/8" OVERSIZED (REGULAR)
5	1	HC0226	GREASE FITTING, 3/4" SAFETAP H2S GBH
6	1	OC0005	O-RING, 1" ADJ NUT STD (2-236 BUNA 90)
7	2	OC0006	O-RING, 1" INSERT STD (2-219 BUNA 90)
8	1	VC0013	NAME TAG - VALVE (MSI/DIXIE) 2x3
9	2	VC0016	PLUG SEAL, 1" STD (BUNA/BRASS)
10	1	VC0036	INSERT SET, 1" STD
11	1	VC0037	PLUG, 1" STD
12	1	VC0038	ADJUSTING NUT, 1" H2S
13	1	VC0063	HANDLE ADAPTER, 1"
14	1	VC0540	VLV BODY, 1" x 2 1/16 10M STD



A2



A1

THIS DRAWING IS THE PROPERTY OF DIXIE IRON WORKS, LTD. THE BORROWER AGREES BY RECEIVING THE DRAWING TO RETURN IT UPON REQUEST AND TO NEITHER REPRODUCE COPY OR FURNISH INFORMATION FROM IT TO OTHERS WITHOUT EXPRESSED WRITTEN PERMISSION OF DIXIE IRON WORKS, LTD. ALL ARTICLES MANUFACTURED IN ACCORDANCE WITH THIS DRAWING SHALL BE CONSIDERED DESIGNS OF DIXIE IRON WORKS, LTD. AND MAY NOT BE USED OR SOLD WITHOUT DIXIE IRON WORKS, LTD. WRITTEN PERMISSION.

CHANGE MADE

1) UPDATED SHEET
2) REPLACED VALVE BODY FROM VC0137 WITH VC0540
03/29/10 RSE

ECN NUMBER

3850

DESCRIPTION

VALVE,
1" x 2 1/16 10M STD

MATERIAL/HEAT TREAT/WELD PROCEDURE

STANDARD SERVICE
10,000 PSI WORKING PRESSURE

DRAWN BY

WJT

DATE

07/21/03

WEIGHT

106 LBS.

SHEET NUMBER

SHEET 1 OF 1

PART NUMBER

VA0013

REV

A



300 West Main Street
Alice, TX 78332

www.diwmsi.com
800.242.0059

MSI is a division of Dixie Iron Works, Ltd.