



## SafeTap™ Grease Fitting Installation Torque

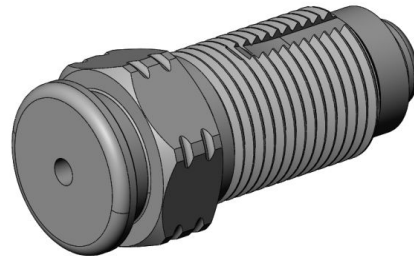
MSI Technical Bulletin 011

Subject: Installation torque for MSI SafeTap™ giant button head grease fitting.

When installing a SafeTap™ grease fitting into MSI equipment such as valves or plugs, it is critical that the installation torque be high enough to ensure adequate sealing pressure yet low enough to prevent mechanical damage such as thread shear or part breakage.

**As of this bulletin, all SafeTap™ grease fittings should be installed according to the following table:**

	Nominal Torque
1" TE valve	80 ft-lbf
All remaining equipment	125 ft-lbf



Note: This ONLY applies to HC0162, HC0226, HC0284, and HC0957.

You may contact an MSI representative at [sales@diwmsi.com](mailto:sales@diwmsi.com) or [engineering@diwmsi.com](mailto:engineering@diwmsi.com) if you have any further questions or concerns.

Thank you for your understanding and cooperation in this matter.

MSI is a division of Dixie Iron Works, Ltd  
300 W. Main St.  
Alice, Texas 78332, USA  
Phone: 800-242-0059  
Fax: 361-664-4840  
[www.diwmsi.com](http://www.diwmsi.com)