

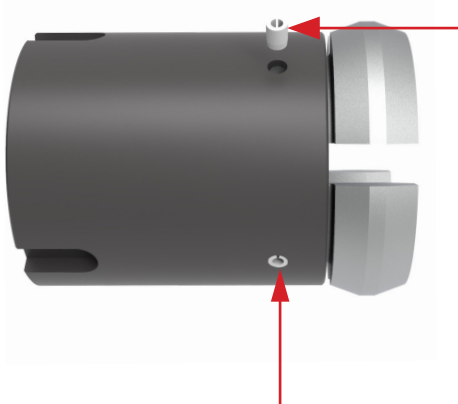


MSI Technical Bulletin 098

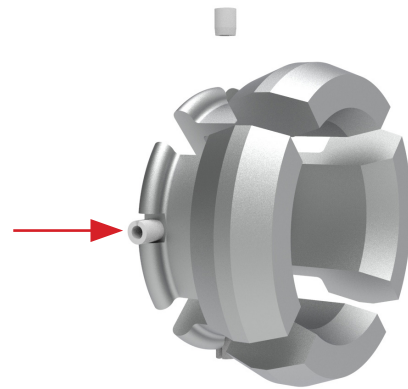
Subject: Updated Assembly Notes for VC-316-015 Seat/Insert Installation Tool



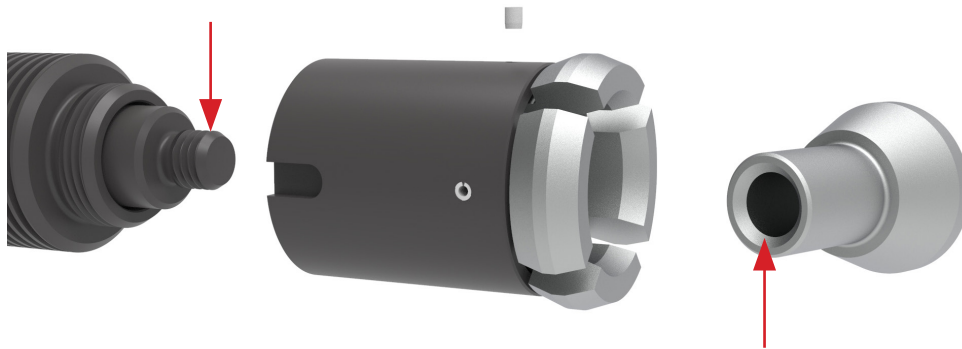
Ensure roll pins are flush with sleeve



Ensure roll pins are positioned in keyways of fingers



Add medium strength blue thread locker to shaft OD threads and to mandrel ID threads. Tighten mandrel 1/4 turn passed hand tight



MSI is a division of Dixie Iron Works, Ltd
300 W. Main St.
Alice, Texas 78332, USA
Phone: 800-242-0059
Fax: 361-664-4840
www.diwmsi.com